



CUSTOM DESIGNED FOR HVACR PROS

- Variable speed, brushless DC motor
- Extremely compact and lightweight:

4 CFM	18.2 lb (8.3 kg)
6 CFM	19.1 lb (8.7 kg)
8 CFM	22.4 lb (10.2 kg)
12 CFM	23.2 lb (10.5 kg)

- 100 to 240VAC (50/60Hz) universal voltage
- 1/2" M, 3/8" M, 1/4" M hose connection ports
- Stores/operates in extreme temperatures
- Auto shut-off solenoid valve
- Large dial vacuum gauge
- 15 Micron ultimate vacuum
- Tall oil sight glass
- Quiet operation

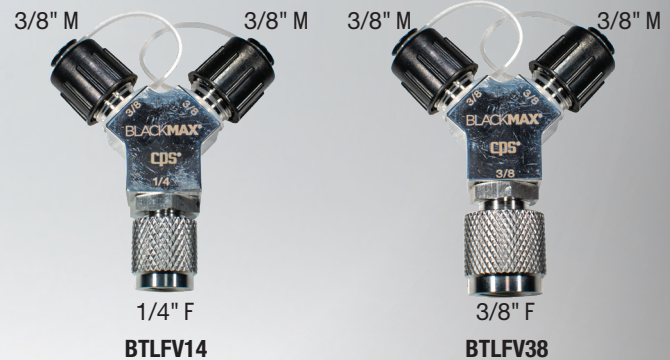


A1 / A2L / A2 / A3
REFRIGERANT READY*

ASHRAE STANDARD 34
Refrigerant Safety Classifications
*Residual Amounts-After Recovery

Fast-Vac Connection Fittings

- For all vacuum pumps with 1/4" M and 3/8" M ports
- Stainless steel construction
- Reduces evacuation time



Replacement Parts:

- **BTLFVX14** (for BTLFV14) /4 O-Rings & 2 Gaskets
- **BTLFVX3812** (for BTLFV38) /4 O-Rings & 2 Gaskets
- **BTLFVX38CAP** (for BTLFV14 & BTLFV38) /3/8" Cap With Tether, 2 Pk

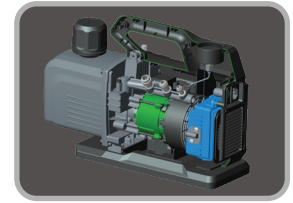


SPECIFICATIONS

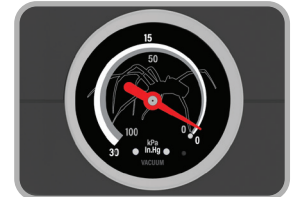
BLACKMAX Model #	VPBM4V	VPBM6V	VPBM8V	VPBM12V
Maximum Free Air Displacement (@ 3200 RPM)	4 CFM	6 CFM	8 CFM	12 CFM
Stages	2			
Ultimate Vacuum	15 Microns			
Refrigerant Class	Compatible With Residual Amounts Of A1, A2L, A2, A3 Refrigerants (Not A Recovery Machine)			
Ignition Proof Construction	Tested To UL12.12.01 Methods For Ignition Proof Requirements Per UL1963 Supplement SB			
Voltage	Universal Voltage 100V Min- 240V Max, @ 50/60Hz			
Motor Type	"BLDC" (Brushless DC Motor With Variable Speed Start Up)			
Maximum RPM	3200			
Motor Size (HP)	1/2 HP		1 HP	
Watts	300		500	
Low Energy Sealed On/Off Switch	Flashing Green LED when connected to Power; Solid Green when pump and fan Running			
Power Cord	Locking 90° IEC Type, 10 Ft (3 m) Length			
Vacuum Pump Oil Capacity (Max)	15.0 Oz (0.44 L)	14.0 Oz (0.41 L)	24.4 Oz (0.72 L)	23.0 Oz (0.68 L)
Vacuum Pump Oil Capacity (Min)	10.5 Oz (0.31 L)	9.5 Oz (0.28 L)	16.4 Oz (0.48 L)	15.0 Oz (0.44 L)
Exhaust/Oil Fill	Mist free			
Vacuum Intake Ports (In Line)	1/4", 3/8" and 1/2" SAE Male Threads			
Analog Vacuum Gauge	Units: kPa, InHg (+/- 2% Accuracy)			
Gas Ballast Valve	(Drys Out The 2nd Stage). Plated Brass			
Solenoid Valve	Normally Closed. Open When Vacuum Pump Is Energized			
Operating Temperature Range	5°F to 130°F (-15°C to 55°C)			
Storage Temperature Range	0°F to 150°F (-17.7°C to 65.5°C)			
Thermal Overload Protection	✓			
Pump Weight (W/o Pkg)	18.2 Lb (8.3 Kg)	19.1 Lb (8.7 Kg)	22.4 Lb (10.2 Kg)	23.2 Lb (10.5 Kg)
Pump Dimensions, Inches (mm)	10"H x 5.8"W x 13.8" L (254 H x 147 W x 352 L mm), 0.48 Cu.Ft.		10.5"H x "6.06" W x 15.5" L (267 x 164 x 394 mm), 0.57 Cu.Ft.	
Approvals	CE and UKCA (Tested to UL 12.12.01 Methods For Ignition Proof Requirements Per UL1963 Supplement SB) EMC (Electro-Magnetic Compatibility): EN IEC 55014-1:2021; EN IEC 55014-2:2021; EN IEC 61000-6-1:2019; EN IEC 61000-6-3:2021			

PACKAGING SPECIFICATIONS

Model #	UPC	Pkg Size (H x W x L), Inches (mm)	Product + Pkg Weight, Lb (Kg)	Product Qty Per Pkg
VPBM4V	750377120978	11.25" H x 8.5" W x 15.3" L (286 x 216 x 391 mm)	20.6 Lb (9.34 Kg)	1
VPBM6V	750377120985		21.32 Lb (9.67 Kg)	1
VPBM8V	750377120992	13.8" H x 8.6" W x 17.1" L (352 x 219 x 436 mm)	25.2 Lb (11.4 Kg)	1
VPBM12V	750377121005		26.0 Lb (11.7 Kg)	1
BTLFV14	750377121340	7" H x 4.5" W x 1" L (178 x 114 x 25 mm)	8 Ozs (227g)	1
BTLFV38	750377121357		8 Ozs (227g)	1
BTLFVX14	750377121906		1 Oz. (28g)	2 Gaskets, 4 O-Rings
BTLFVX3812	750377121913	2" H x 4" W x 1/2" L (51 x 102 x 13 mm)	1 Oz. (28g)	2 Gaskets, 4 O-Rings
BTLFVX38CAP	750377121944		1 Oz. (28g)	2 Caps



1. Efficient, Quiet, Variable Speed DC Motor



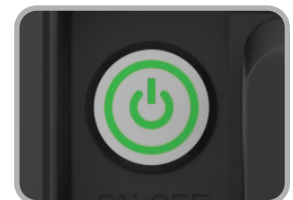
2. Large Vacuum Gauge - For Quick Reference



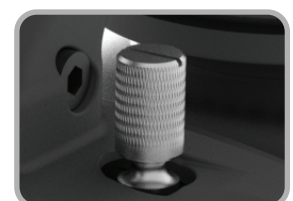
3. Tall Sight Glass - To View Oil Level & Purity



4. For Use In Temperature Extremes 5F To 130F /15C To 55C)



5. Ignition-Proof On/Off Switch & Thermal Overload Protection



6. GAS BALLAST VALVE - For Deeper Vacuum