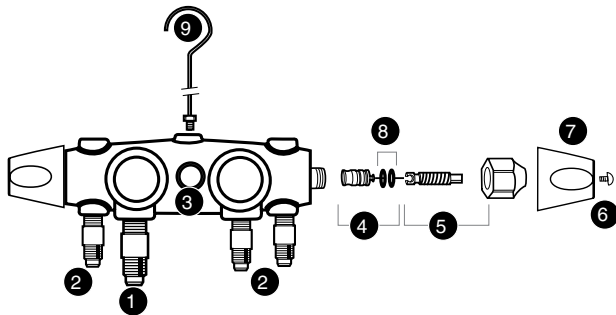


Repair Parts



Repair Parts

4-VALVE ALUMINUM ZEPPELIN®		
1	U1-6B	3/8" Intake
2	U1-4A	1/4" Intake
3	MR-525	Sight glass
4	MR-605	Piston w/seat and o-rings
5	MR-607	Stem and nut
6	MR-601	Handwheel and screw
7	MR-503	Handwheel screws (2)
8	MR-409	O-rings (2)
9	M2-102N	Hanging hook

See your wholesaler for a complete line of gauges.

WARNING: This product can expose you to chemicals including lead which are known to the State of California to cause cancer and birth defects or other reproductive harm. For more information go to www.P65Warnings.ca.gov

Limited Warranty

Manifold bar has a lifetime warranty, while the components (gauges, hoses, handles, hose holders, etc.), are covered under the limited warranty policy. Products are warranted for a period of one year from date of shipment by JB and limited to repair, replacement or credit, if in our opinion are defective due to workmanship and/or materials. Defective components should be returned to the wholesaler from which the product was purchased for evaluation. Manifolds are designed for use with all refrigerants except Ammonia (R717). Working pressures are limited to gauge dial range. Use of this manifold under any other conditions voids the warranty.

For Professional Use Only

JB manifolds are designed for use by technically trained HVAC/R service engineers only. Due to the high pressures encountered in all systems this manifold will be used on, plus the dangers due to the physical and chemical nature of refrigerants and oils present in all systems, misapplication could result in injury or death.



JB INDUSTRIES

JB INDUSTRIES • 630.851.9444 • sales@jbind.com Part No. 25000-308 0518

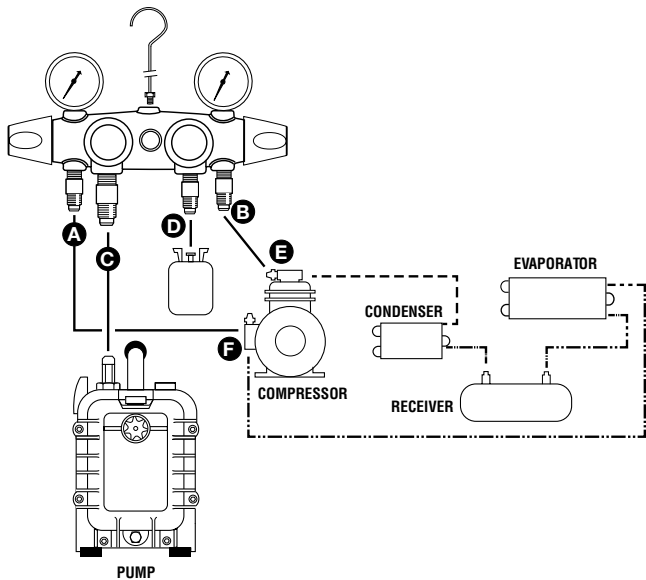
ZEPPELIN®

4-VALVE ALUMINUM MANIFOLD



INSTRUCTIONS

Evacuation/Charging



CAUTION: Always consult manufacturer service manual or instruction sheet for recommended procedures

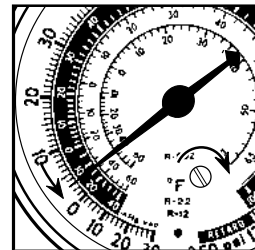
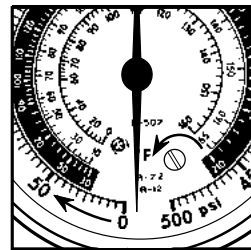
	MANIFOLD				COMPRESSOR	
	A	B	C	D	E	F
	LOW SIDE	HIGH SIDE	EVACUATION PORT	CHARGING PORT	DISCHARGE SERVICE VALVE	SUCTION SERVICE VALVE
	BLUE	RED	BLACK	YELLOW	RED	BLUE
To observe operating pressures	Closed	Closed	Closed	Closed	Back seated and cracked open	Back seated and cracked open
To charge refrigerant through suction valves	Open	Closed	Closed	Open	Back seated and cracked open	Front seated
To charge oil through suction valve	Open	Closed	Open	Closed	Back seated	Front seated
To charge liquid refrigerant through discharge valve	Closed	Open	Closed	Open	Midway open	—
To build low pressure; for control setting or leak detecting	Open	Open	Closed	Closed	Back seated and cracked open	Midway open
To purge refrigerant from discharge valve	Closed	Open	Closed	Open	Back seated and cracked open	—
To evacuate with auxiliary vacuum pump	Open	Open	Open	Closed	Midway open	Midway open

Recalibration

Each gauge is individually tested and calibrated prior to shipment. Due to its sensitivity, the gauge may need to be “zeroed in” prior to usage.

Adjusting Gauge Recalibration to Zero

1. For 2-1/2": remove lens; for 3-1/8": remove lens plug
2. Turn recal screw **slightly** in the opposite direction that pointer is to be moved. Maximum recal screw adjustments is half turn. Over adjustment will permanently destroy calibration.
3. Replace lens/lens plug



Gauges are sensitive instruments—over adjustment and/or being subjected to pressures over dial range are not covered under warranty terms.