



Empowering you to work smarter

**NAVAC Inc.**  
[www.NavacGlobal.com](http://www.NavacGlobal.com)  
Tel/Fax: +1 877 MY-NAVAC  
877 696 2822  
MADE IN PRC

**NX1**  
Nexus Digital Manifold Gauge  
Quick Set Up Sheet

### Step 1: Link NX1 with Temperature Probe



NST1

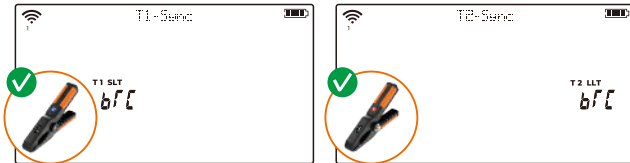
NX1

NST2

NX1

To pair the low-side temperature probe, press and hold **ENTER** + **▲** for 3 seconds.

To pair the high-side temperature probe, press and hold **ENTER** + **▼** for 3 seconds.



NST1 Successfully Connected

NST2 Successfully Connected

### Step 2: Link NX1 with Vacuum Gauge

To pair the vacuum gauge, click "Mode" button to switch NX1 to Evacuation Mode, then press and hold **ENTER** + **▼** for 3 seconds.



NMV1S

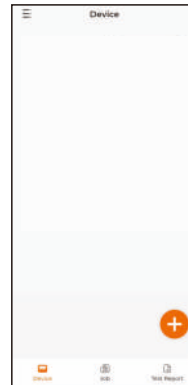
NX1

NMV1S Successfully Connected

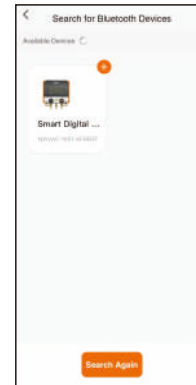
### Step 3: Link NX1 with myNAVAC APP

Note: If you are using NX1 with a vacuum gauge and temperature probes, follow step one and two **before** connecting the NX1 to the APP.

- Turn on your mobile device's Bluetooth.
- Scan QR code or search for "myNAVAC" in the APP market and install the APP.
- Register and log in to access full APP features.



On the Device page, tap the plus button in the lower right corner to search available devices.



Find the NX1, and click the plus button in the upper right corner to link NX1 with myNAVAC APP.



Click the NX1 icon to enter the tool interface to explore various functionalities including pressure, temperature, and vacuum reading, Record, Device Description, and Test Reports.