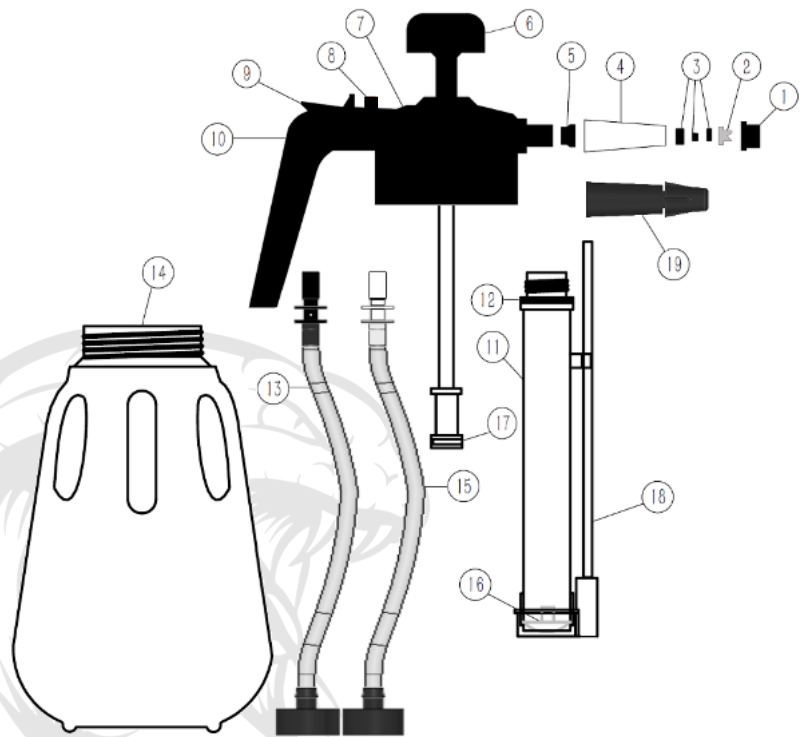


PLEASE READ CAREFULLY BEFORE USE
VIPER 2-in-1 FOAM SPRAYER
PART No. RT301S

No Description

- ① Spray Nozzle Connector
- ② Spray Nozzle
- ③ O-Ring and Foamer Insert
- ④ Foam Nozzle Complete
- ⑤ EPDM Pressure Seal
- ⑥ Hand Pump
- ⑦ Foamer Sprayer Housing
- ⑧ Pressure Relief Valve
- ⑨ Foam / Spray Trigger
- ⑩ Foam Sprayer Handle
- ⑪ Siphon Casing
- ⑫ EPDM O-Ring Seal
- ⑬ **Foam** Liquid Pickup Tube (Black)
- ⑭ Canister
- ⑮ **Spray** Liquid Pickup Tube (White)
- ⑯ Check Valve
- ⑰ Pump O-Ring Seal
- ⑱ Air Tube
- ⑲ Spray Nozzle Complete



2-in-1 Foaming and Jet nozzle for all HVACR servicing or domestic, commercial and industrial cleaning

- Compatible with all VIPER Coil Cleaners, Venom Packs, Pan & Drain Treatment and VIPER Big Blu Leak Detector.
- All seals and O-Rings are rated for liquids with a pH level of 7 to 14
- Pressure release valve located on the Foam Sprayer Housing

Operating Instructions

Setup

1. Check each part of the Sprayer to ensure good working condition
2. Unscrew Foam Sprayer housing (7) and remove from Canister (14) to check Liquid Tube Assembly (13) is secure

Foaming Nozzle mode (default setting): Using concentrate cleaning solution

1. Mix concentrate solution with potable water in Canister (14) as per manufacturer's recommendation
2. Ensure the liquid solution does not exceed "Max Fill Line" on Canister (14) (do not overfill), then shake gently

Jet Nozzle mode: Using ready-mix liquid

1. Convert Sprayer to Jet Nozzle mode (please see *Converting from Foaming Nozzle mode to Jet Nozzle mode*)
2. Pour ready-mix solution into Canister (14).
3. Ensure liquid solution does not exceed "Max Fill Line" on Canister (14), then gently shake

Activating the Sprayer

1. Attach Canister (14) to Foam Sprayer Housing (7) and securely tighten
2. Pressurise Sprayer by using Hand Pump (6) until Pressure Relief Valve (8) begins to release
3. Holding Sprayer upright, point nozzle at target object and press Foam / Sprayer Trigger (9)
4. Slide Foam / Spray Trigger (9) forward for consistent spraying
5. Press red Pressure Relief Valve (8) to release pressure prior to cleaning and storage

Converting from Foaming Nozzle mode to Jet Nozzle mode

1. Press blue Pressure Relief Valve (8) to relieve pressure inside Canister (14)
2. Separate Foamer Sprayer Housing (7) from Canister (14)
3. Remove **Foam** Liquid Pickup Tube (Black) (13) by pulling the fitting as indicated by the arrow in *Figure 1*
4. Store **Foam** Liquid Pickup Tube (Black) (13) in a safe place for reuse

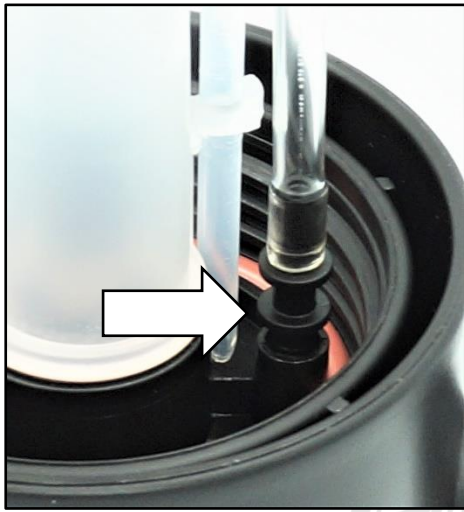


Figure 1

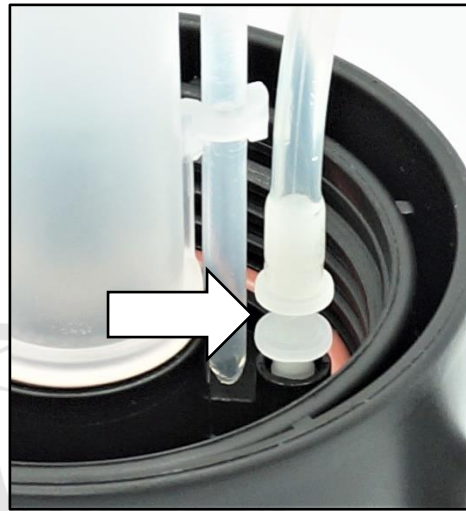


Figure 2

5. Push **Spray** Liquid Pickup Tube (White) (15) into hole in Foamer Sprayer Housing (7)
6. Unscrew Foam Nozzle Complete (4) from Foam Sprayer Housing (7) and replace with Spray Nozzle Complete (19)
7. Store Foam Nozzle Complete (4) in a safe place for reuse
8. Reinstall Foam Sprayer Housing (7) onto Canister (14) and tighten
9. Pressurise sprayer by pumping Hand Pump (6) until Pressure Relief Valve (8) begins to release
10. Check for leaks and retighten Foam Sprayer Housing (7) on Canister (14) if necessary

Converting from Jet Nozzle mode to Foaming Nozzle mode

Reverse the procedure described in *Converting from Foaming Nozzle mode to Jet Nozzle mode* to convert the unit back to a Foam Sprayer.