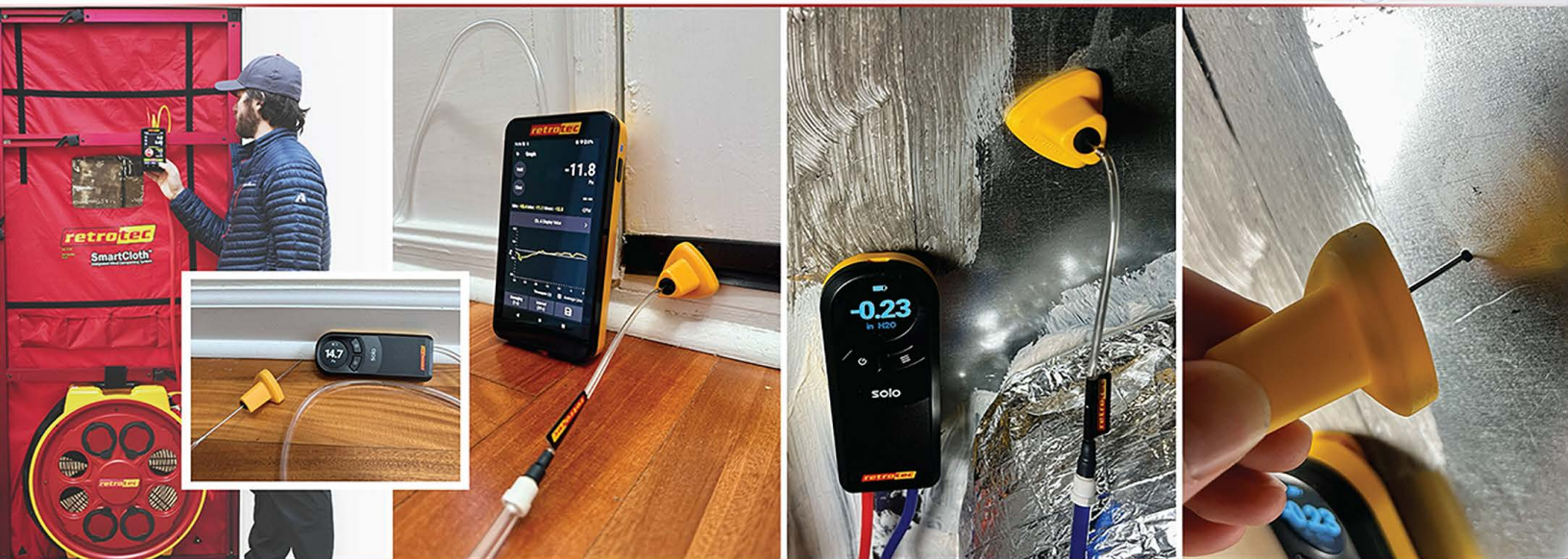


Retrotec MultiProbe

Manual/Reference Guide



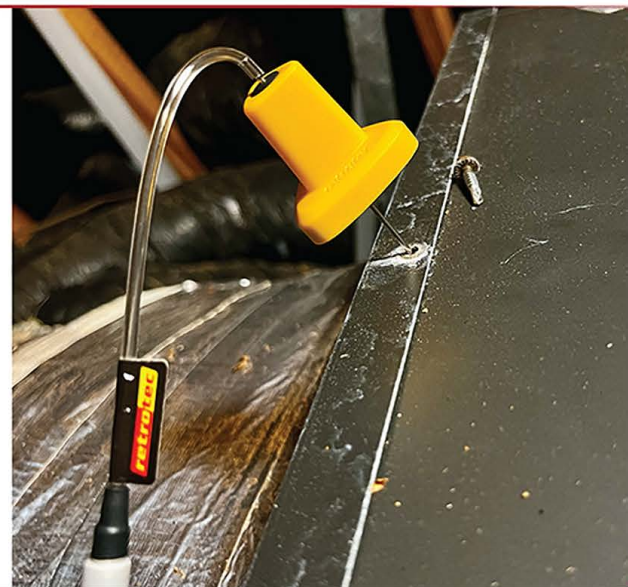
The MultiProbe

The multi probe is a device that, when paired with a high-precision manometer, allows testers to read air pressure in a variety of situations in both duct systems and building enclosures. With its small, stainless-steel tip, it is small enough to access ducts and building assemblies without the need to drill a hole. If a hole does need to be added, it can be very small compared to the hole needed for other probes on the market. The stainless steel is strong enough to resist bends and kinks and the magnetic adapter can handle temperatures up to 220F (104.4C).

Static Pressure

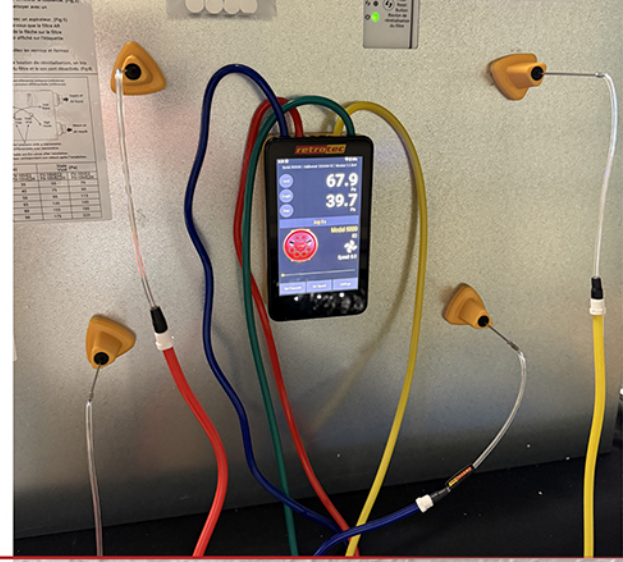
With the magnetic adapter installed, it can be used as a static pressure probe to easily access duct systems without falling out of place. Since the probe is small in diameter, there may be instances where the tester can avoid drilling a hole. Sometimes a screw in the air handler or furnace can be backed out and the probe will fit in the existing hole to take a reading. If a hole needs to be drilled into a duct system, we recommend a 1/8" (3mm) hole for access. We recommend the stoppers below to plug up the hole. They can be installed with the tip of the Mini Probe.

Plugs: <https://www.mcmaster.com/4491K39/>



ERV / HRV

With the magnetic adapter installed, the Multi Probe can also be used to balance some ERVs and HRVs. Some ERV/HRVs have test ports included from the manufacturer. If test ports are present, testers can remove them using a flat head screwdriver or sometimes even a quarter to turn them out. These factory-installed ports need to be removed so the tip of the Multi Probe has full access to the airflow. Four Multi Probes can be used with a DM32/DM32X to test all four branches of the ERV/HRV at once. Two probes can also be used to test the intake and exhaust separately with the Solo manometer. Remember to replace the manufacturer's test ports and close them off if the manufacturer provides caps to cover the ports.



Zonal Pressure Diagnostics

When the magnetic adapter is pushed all the way up the probe or completely removed, the multi probe can be used to access attics, crawl spaces, basements, and garages from inside the house. With a blower door running, the multi probe can help determine how leaky these areas are. This can usually be done without needing to make a hole in a ceiling or floor. Since the diameter of the tube is very small, testers can usually find an existing hole that will provide access. Existing holes usually exist in bath fan boxes, around lighting, supply or return vents, or any other penetration through the assembly. Just be sure to not touch any live wiring with the tip of the probe.



Locating Building Envelope Leaks

With a blower door running and the multi probe's magnetic adapter pushed all the way back or removed, testers can locate leaky wall assemblies by inserting it into a wall via existing holes, cracks, and openings.



Building Pressures

With the magnetic adapter pushed all the way back or removed, the multi probe can be used to reference the outside of the building by closing it under an exterior door. The probe must be attached to a high-resolution manometer such as the Solo or DM32/DM32X. It is best to place it on the leeward side of the building in windy conditions. A longer time average setting can be used on the manometer to help stabilize readings in windy conditions. This type of test can be used to determine if make-up air systems for exhaust fans are working, which side of the HVAC system has the most duct leakage, and how much the building's exhaust fans depressurize a building.

