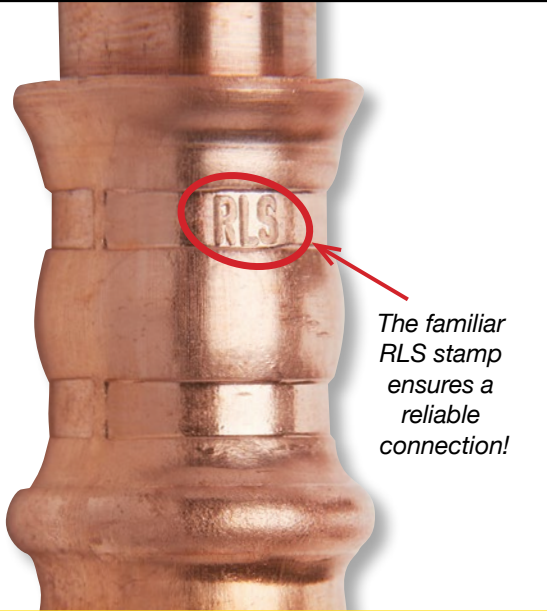




The Original Flame-Free
Refrigerant Press Fittings

Product Catalog



*The familiar
RLS stamp
ensures a
reliable
connection!*



**PROUDLY MADE
IN AMERICA**

Table of Contents



Introduction	3-5
Couplings and Slip Couplings	6
90° Elbows and 90° Street Elbows.....	7
45° Elbows and Tees	8
Reducers and Reducing Bushings.....	9
SAE/Euro Flares and Caps.....	10
Ancillary Products	11-12
Tools, Jaws and Accessories	13-15
Technical Data	16

15-Year Limited Warranty

All RLS press fittings are backed by a 15-year limited warranty when installed in accordance with RLS installation instructions using RLS-approved tools and jaws.

See information on rapidlockingsystem.com for complete details.



RLS press fittings were specifically designed and engineered to join copper tube in high-pressure HVAC and refrigeration systems. Our patented RLS press fittings are fully registered and listed to UL207 for pressures up to 700 PSI.

These first-of-their-kind fittings connect quickly and easily using an RLS-approved press tool and jaws, replacing the time-consuming practice of manually brazing joints. The pressing procedure is similar to the one used with water press fittings. RLS press fittings, however, were developed to withstand the high pressures found in HVAC/R systems.

SAFE, FAST AND RELIABLE: THE IDEAL INSTALLATION AND REPAIR SOLUTION

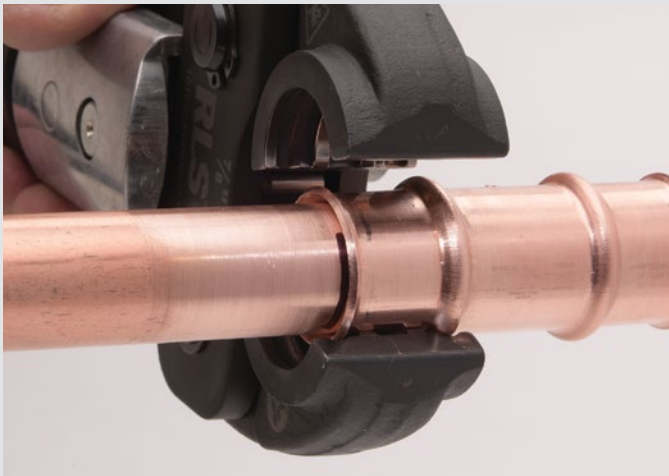
SAFE: Elimination of the brazing process by using a flame-free press tool results in a safer work environment without the added risk of fire hazards.

FAST: Connections completed in 10 seconds.

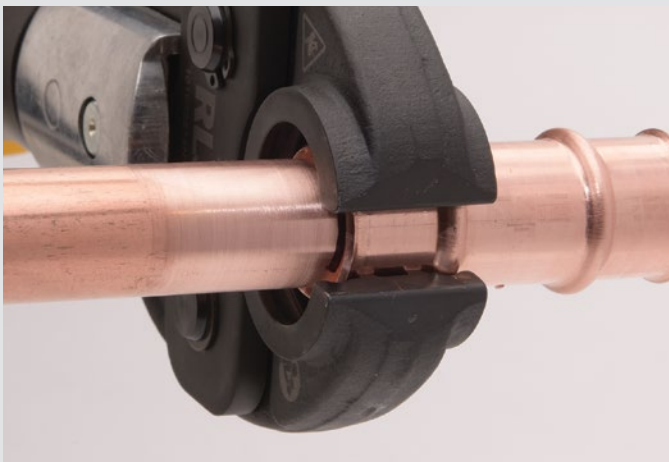
RELIABLE: More consistent and dependable connections requiring less rework than the traditional brazing method. Plus, RLS press fittings are backed by a 15-year limited warranty.

Overall, projects will result in higher-quality work that can be completed successfully by fewer people in significantly less time, resulting in increased profit per job and the ability to get more jobs done.

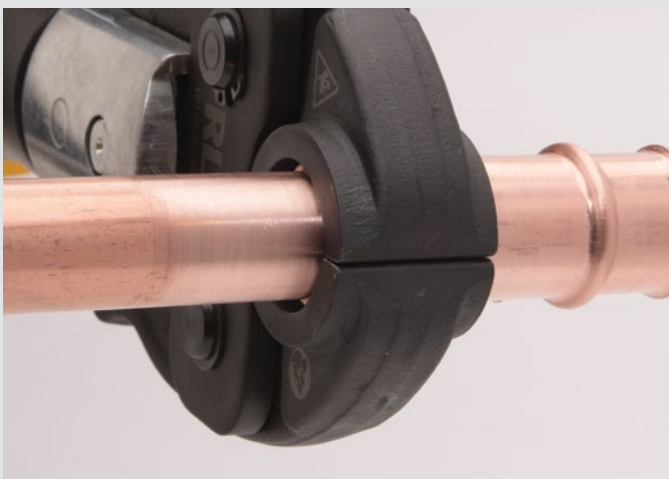
Introduction



1. Insert the tube in the fitting



2. Align the jaws



3. Activate the battery-powered tool

As easy as 1-2-3!

RLS press fittings offer a simple, effective and economical method to create reliable copper tube connections. The RLS pressing process is very straightforward, and can be completed with minimal training. Copper tube ends are first prepped the same way as with brazing. Then, in just 10 seconds, the press tool creates a permanent and reliable mechanical joint without the dangers of heat or flammable gas.

THE RLS ADVANTAGE

- *Connects in 10 seconds*
- *UL listed to 700 psi*
- *Huge labor and time savings*
- *Less equipment required*
- *Safer conditions, no fire hazards*
- *No hot work permits*
- *No fire spotters*
- *No need to nitrogen purge*
- *More flexible access to job sites*
- *15-year limited warranty**

*See rapidlockingsystem.com for complete details.



All RLS products are approved for use with the following refrigerants:

R-134A	R-404A	R-407A	R-407C	R-407F	R-407H
R-410A	R-417A	R-421A	R-422B	R-422D	R-424A
R-427A	R-434A	R-437A	R-438A	R-448A	R-449A
R-450A	R-452A	R-453A	R-456A	R-507A	R-513A
R-513B	R-718	Ethylene Glycol			

Contact us about special blends or other refrigerants not listed here.

Check your local codes to ensure that RLS press fittings are suitable for use with your particular refrigerant.

RLS fittings are also compatible with the following industrial (non-refrigerant) gasses: nitrogen, argon, helium and oxygen (non-medical).

FLAME-FREE FITTINGS FOR A SAFER, EASIER FUTURE.

With the industry transitioning to flammable refrigerants, contractors using RLS press fittings will benefit from offering flame-free services and a safer work environment. Additional advantages include:

- Hot work permits no longer needed
- No fire spotters
- No need to nitrogen purge
- No dragging heavy equipment to the job site

Add up all of the benefits – safer conditions, no fire hazards, and increased efficiencies – and RLS press fittings can offer huge cost and time savings, with far fewer headaches.

RLS XL IS HERE!



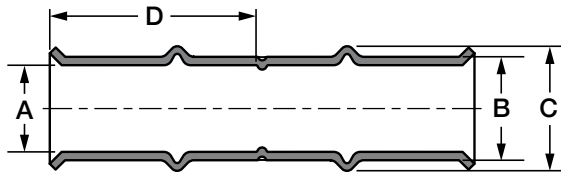
1-5/8" and 2-1/8" couplings, elbows, tees and reducers.

COUPLINGS

Couplings



DIMENSIONS

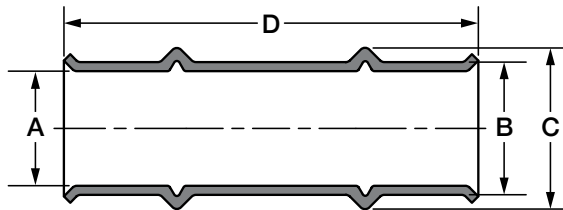


Size (Inch)	Part Number	Dimensions (Inches)				Box Quantity	Carton Quantity	Carton Weight
		A	B	C	D			
1/4	3011040400111	0.26	0.34	0.45	0.95	10	100	2.3 lbs.
5/16	3011050500111	0.32	0.40	0.52	0.93	10	100	2.9 lbs.
3/8	3011060600111	0.39	0.47	0.59	0.98	10	100	3.5 lbs.
1/2	3011080800111	0.51	0.59	0.73	1.25	10	100	6.1 lbs.
5/8	3011101000111	0.64	0.74	0.89	1.24	10	100	9.5 lbs.
3/4	3011121200111	0.76	0.88	1.07	1.29	10	40	5.5 lbs.
7/8	3011141400111	0.89	1.02	1.19	1.31	10	40	7.0 lbs.
1	3011161600111	1.01	1.16	1.36	1.31	10	40	9.5 lbs.
1-1/8	3011181800111	1.14	1.29	1.45	1.29	10	40	10.3 lbs.
1-1/4	3011202000111	1.26	1.41	1.62	1.30	12	24	7.4 lbs.
1-3/8	3011222200111	1.39	1.54	1.75	1.57	12	24	9.0 lbs.
1-5/8	3011262600111	1.64	1.88	2.18	1.85	4	4	3.4 lbs.
2-1/8	3011343400111	2.14	2.38	2.68	2.34	4	4	5.5 lbs.

Slip Couplings



DIMENSIONS



Size (Inch)	Part Number	Dimensions (Inches)				Box Quantity	Carton Quantity	Carton Weight
		A	B	C	D			
1/4	3021040400111	0.26	0.34	0.45	2.00	10	100	2.3 lbs.
5/16	3021050500111	0.32	0.40	0.52	2.01	10	100	2.9 lbs.
3/8	3021060600111	0.39	0.47	0.59	2.05	10	100	3.5 lbs.
1/2	3021080800111	0.51	0.59	0.73	2.74	10	100	6.1 lbs.
5/8	3021101000111	0.64	0.74	0.89	2.75	10	100	9.5 lbs.
3/4	3021121200111	0.76	0.88	1.07	2.75	10	40	5.5 lbs.
7/8	3021141400111	0.89	1.02	1.19	2.74	10	40	7.0 lbs.
1-1/8	3021181800111	1.14	1.29	1.45	2.77	10	40	10.3 lbs.
1-3/8	3021222200111	1.39	1.54	1.75	3.15	12	24	9.0 lbs.

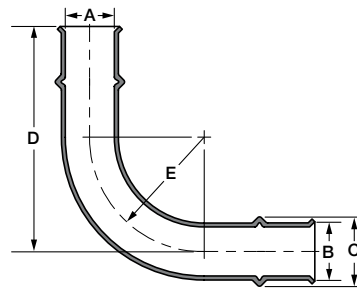
ELBOWS



90° Elbows



DIMENSIONS

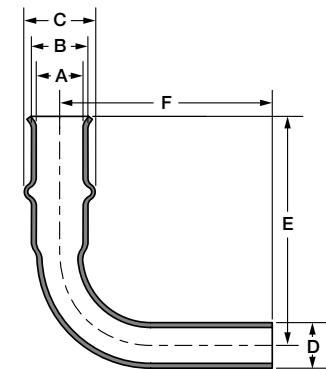


Size (Inch)	Part Number	Dimensions (Inches)					Box Quantity	Carton Quantity	Carton Weight
		A	B	C	D	E			
1/4	3031040400111	0.26	0.34	0.45	2.01	0.68	10	100	4.4 lbs.
5/16	3031050500111	0.32	0.40	0.52	2.13	0.81	10	100	5.8 lbs.
3/8	3031060600111	0.39	0.47	0.59	2.27	0.93	10	100	7.4 lbs.
1/2	3031080800111	0.51	0.59	0.73	2.88	1.18	10	100	11.6 lbs.
5/8	3031101000111	0.64	0.74	0.89	3.21	1.47	10	100	20.0 lbs.
3/4	3031121200111	0.76	0.88	1.07	3.47	1.76	10	40	12.3 lbs.
7/8	3031141400111	0.89	1.02	1.19	3.75	2.03	10	40	16.6 lbs.
1	3031161600111	1.01	1.16	1.36	4.04	2.33	10	40	22.2 lbs.
1-1/8	3031181800111	1.14	1.29	1.45	4.29	2.54	10	40	27.8 lbs.
1-1/4	3031202000111	1.26	1.41	1.62	4.30	2.53	5	5	3.7 lbs.
1-3/8	3031222200111	1.39	1.54	1.75	4.54	2.75	5	5	4.9 lbs.
1-5/8	3031262600111	1.64	1.88	2.18	5.49	3.25	2	2	4.6 lbs.
2-1/8	3031343400111	2.14	2.38	2.68	6.83	4.25	2	2	7.3 lbs.

90° Street Elbows



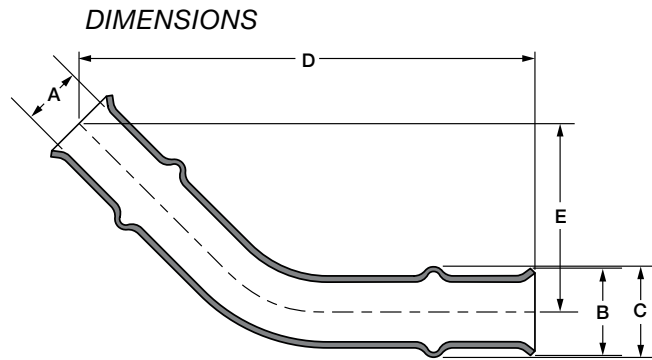
DIMENSIONS



Size (Inch)	Part Number	Dimensions (Inches)						Box Quantity	Carton Quantity	Carton Weight
		A	B	C	D	E	F			
3/8	3501060600111	0.39	0.47	0.59	0.38	1.75	1.89	10	100	4.8 lbs.
1/2	3501080800111	0.51	0.59	0.73	0.50	2.56	2.65	10	100	9.2 lbs.
5/8	3501101000111	0.64	0.74	0.89	0.63	2.64	2.81	10	100	15.1 lbs.
3/4	3501121200111	0.76	0.88	1.07	0.75	3.00	3.15	10	40	9.2 lbs.
7/8	3501141400111	0.89	1.02	1.19	0.88	3.25	3.40	10	40	12.7 lbs.
1-1/8	3501181800111	1.14	1.29	1.45	1.13	3.80	3.93	10	40	22.1 lbs.
1-3/8	3501222200111	1.39	1.54	1.75	1.38	4.38	4.51	5	5	3.8 lbs.

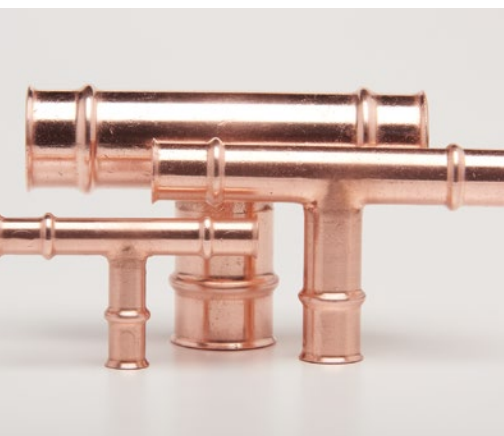
ELBOWS/TEES

45° Elbows

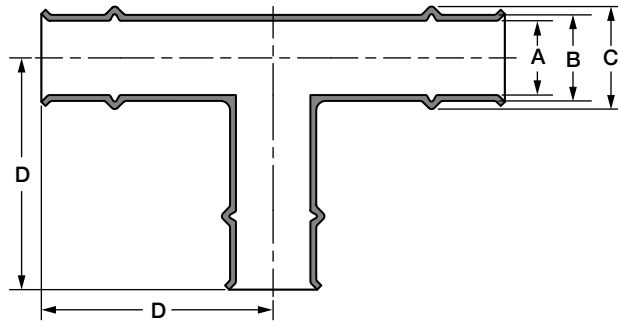


Size (Inch)	Part Number	Dimensions (Inches)					Box Quantity	Carton Quantity	Carton Weight
		A	B	C	D	E			
3/8	3081060600111	0.39	0.56	0.59	2.94	1.21	10	100	5.8 lbs.
1/2	3081080800111	0.51	0.71	0.73	3.72	1.54	10	100	9.6 lbs.
5/8	3081101000111	0.64	0.86	0.88	3.97	1.64	10	100	15.9 lbs.
3/4	3081121200111	0.76	1.02	1.07	4.12	1.70	10	40	9.4 lbs.
7/8	3081141400111	0.89	1.13	1.19	4.49	1.86	10	40	12.7 lbs.
1-1/8	3081181800111	1.14	1.41	1.45	4.84	2.00	10	40	20.2 lbs.
1-3/8	3081222200111	1.39	1.68	1.75	5.11	2.11	5	5	3.8 lbs.
1-5/8	3081262600111	1.64	2.00	2.18	6.22	2.58	2	2	3.1 lbs.
2-1/8	3081343400111	2.14	2.57	2.68	7.44	3.08	2	2	4.7 lbs.

Tees



DIMENSIONS

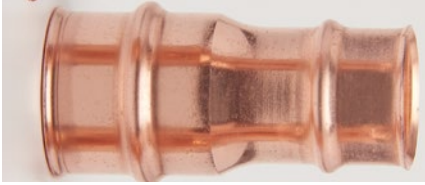


Size (Inch)	Part Number	Dimensions (Inches)				Box Quantity	Carton Quantity	Carton Weight
		A	B	C	D			
3/8	3091060606111	0.39	0.47	0.59	1.63	10	100	8.4 lbs.
1/2	3091080808111	0.51	0.59	0.72	2.23	10	100	26.4 lbs.
5/8	3091101010111	0.64	0.74	0.87	2.30	10	100	26.8 lbs.
3/4	3091121212111	0.76	0.88	1.05	2.38	10	40	15.0 lbs.
7/8	3091141414111	0.89	1.02	1.19	2.43	10	40	20.3 lbs.
1	3091161616111	1.01	1.16	1.36	2.59	10	40	23.7 lbs.
1-1/8	3091181818111	1.14	1.29	1.45	2.56	10	40	30.4 lbs.
1-1/4	3091202020111	1.26	1.41	1.62	3.36	5	5	4.7 lbs.
1-3/8	3091222222111	1.39	1.54	1.75	3.36	5	5	5.3 lbs.
1-5/8	3091262626111	1.64	1.88	2.18	3.95	2	2	4.7 lbs.
2-1/8	3091343434111	2.14	2.38	2.68	4.18	2	2	6.3 lbs.

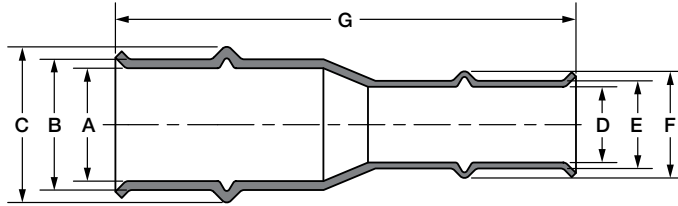
REDUCERS/REDUCING BUSHINGS



Reducers



DIMENSIONS

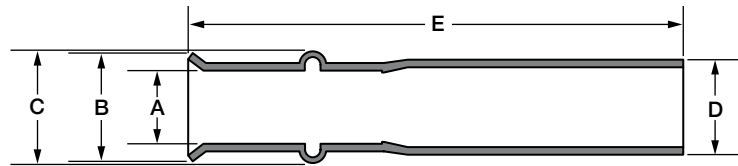


Size (Inch)	Part Number	Dimensions (Inches)							Box Quantity	Carton Quantity	Carton Weight
		A	B	C	D	E	F	G			
3/8 to 1/4	3051060400111	0.39	0.47	0.59	0.26	0.34	0.45	2.24	10	100	3.8 lbs.
1/2 to 1/4	3051080400111	0.51	0.59	0.73	0.26	0.34	0.45	2.71	10	100	5.0 lbs.
1/2 to 3/8	3051080600111	0.51	0.59	0.73	0.39	0.47	0.58	2.58	10	100	5.5 lbs.
5/8 to 1/4	3051100400111	0.64	0.74	0.89	0.26	0.34	0.45	2.70	10	100	7.9 lbs.
5/8 to 3/8	3051100600111	0.64	0.74	0.89	0.39	0.47	0.58	2.70	10	100	8.1 lbs.
5/8 to 1/2	3051100800111	0.64	0.74	0.87	0.51	0.59	0.72	3.10	10	100	8.7 lbs.
3/4 to 1/2	3051120800111	0.76	0.88	1.05	0.51	0.59	0.72	3.10	10	40	4.7 lbs.
3/4 to 5/8	3051121000111	0.76	0.88	1.05	0.64	0.74	0.87	3.00	10	40	5.2 lbs.
7/8 to 1/2	3051140800111	0.89	1.02	1.19	0.51	0.59	0.72	3.05	10	40	5.6 lbs.
7/8 to 5/8	3051141000111	0.89	1.02	1.19	0.64	0.74	0.87	3.05	10	40	6.6 lbs.
7/8 to 3/4	3051141200111	0.89	1.02	1.19	0.76	0.88	1.05	3.11	10	40	7.3 lbs.
1 to 7/8	3051161400111	1.01	1.16	1.37	0.89	1.02	1.19	3.09	10	40	9.1 lbs.
1-1/8 to 1/2	3051180800111	1.14	1.29	1.45	0.51	0.59	0.72	3.25	10	40	8.1 lbs.
1-1/8 to 5/8	3051181000111	1.14	1.29	1.45	0.64	0.74	0.87	3.25	10	40	9.0 lbs.
1-1/8 to 3/4	3051181200111	1.14	1.29	1.45	0.76	0.88	1.05	3.18	10	40	9.6 lbs.
1-1/8 to 7/8	3051181400111	1.14	1.29	1.45	0.89	1.02	1.19	3.10	10	40	9.9 lbs.
1-3/8 to 7/8	3051221400111	1.39	1.54	1.75	0.89	1.02	1.19	3.66	12	24	7.9 lbs.
1-3/8 to 1-1/8	3051221800111	1.39	1.54	1.75	1.14	1.29	1.45	3.34	12	24	8.2 lbs.
1-5/8 to 1-1/8	3051261800111	1.64	1.88	2.18	1.14	1.29	1.45	4.50	4	4	2.9 lbs.
1-5/8 to 1-3/8	3051262200111	1.64	1.88	2.18	1.39	1.54	1.75	4.30	4	4	3.0 lbs.
2-1/8 to 1-3/8	3051342200111	2.14	2.38	2.68	1.39	1.54	1.75	5.20	4	4	4.3 lbs.
2-1/8 to 1-5/8	3051342600111	2.14	2.38	2.68	1.64	1.88	2.18	5.05	4	4	5.2 lbs.

Reducing Bushings



DIMENSIONS



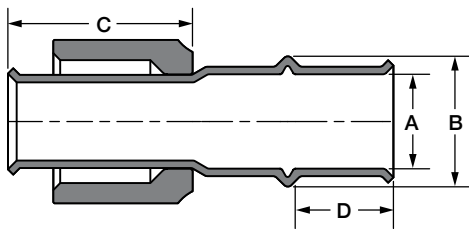
Size (Inch)	Part Number	Dimensions (Inches)					Box Quantity	Carton Quantity	Carton Weight
		A	B	C	D	E			
1/2 to 3/8	3521080600111	0.39	0.56	0.59	0.50	2.50	10	100	4.6 lbs.
5/8 to 1/2	3521100800111	0.51	0.68	0.72	0.63	2.95	10	100	7.3 lbs.
3/4 to 5/8	3521121000111	0.64	0.84	0.87	0.75	2.98	10	40	4.4 lbs.
7/8 to 3/4	3521141200111	0.76	1.02	1.05	0.88	3.04	10	40	5.9 lbs.
1-1/8 to 7/8	3521181400111	0.89	1.10	1.19	1.13	3.06	10	40	8.5 lbs.
1-3/8 to 1-1/8	3521221800111	1.14	1.40	1.45	1.38	3.12	12	24	7.0 lbs.

FLARES/CAPS

SAE/Euro Flares



DIMENSIONS



Per ARI Guideline M-97 45° Refrigeration Flare Fittings and Copper Tubing

Size	Torque, ft-lbs [N*m]	
	Minimum	Maximum
1/4"	8 [11]	10 [14]
3/8"	15 [20]	25 [34]
1/2"	25 [34]	35 [47]
5/8"	40 [54]	55 [75]
3/4"	50 [68]	60 [81]

Note: Per Section 9.5 of the M-97 Guideline, when applying torque to the flare connection the use of lubricants/lubrication is not recommended.

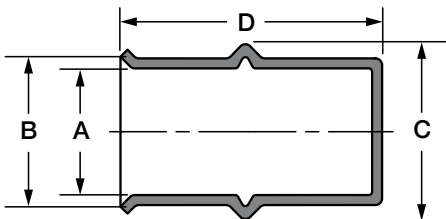
Note: Applying a torque above the maximum limit may distort or damage the sealing surface of the flare.

Size (Inch)	Part Number	Dimensions (Inches)				Box Quantity	Carton Quantity	Carton Weight
		A	B	C	D			
1/4	3291040000111	0.26	0.45	1.38	0.56	10	100	2.5 lbs.
3/8	3291060000111	0.39	0.59	1.38	0.58	10	100	3.7 lbs.
1/2	3291080000111	0.51	0.72	1.13	0.75	10	100	5.9 lbs.
5/8	3291100000111	0.64	0.87	1.48	0.75	10	40	3.6 lbs.
3/4	3291120000111	0.76	1.05	1.48	0.80	10	40	5.2 lbs.

Caps



DIMENSIONS



Size (Inch)	Part Number	Dimensions (Inches)				Box Quantity	Carton Quantity	Carton Weight
		A	B	C	D			
1/4	3071040000111	0.26	0.34	0.45	1.45	10	100	1.8 lbs.
5/16	3071050000111	0.32	0.40	0.52	1.45	10	100	2.3 lbs.
3/8	3071060000111	0.39	0.47	0.59	1.45	10	100	2.6 lbs.
1/2	3071080000111	0.51	0.59	0.72	1.97	10	100	5.1 lbs.
5/8	3071100000111	0.64	0.74	0.87	1.98	10	100	6.9 lbs.
3/4	3071120000111	0.76	0.88	1.05	1.97	10	40	3.8 lbs.
7/8	3071140000111	0.89	1.02	1.19	1.90	10	40	4.9 lbs.
1	3071160000111	1.01	1.16	1.36	2.00	10	40	7.2 lbs.
1-1/8	3071180000111	1.14	1.29	1.45	1.99	10	40	7.8 lbs.
1-1/4	3071200000111	1.26	1.41	1.62	2.50	12	24	6.5 lbs.
1-3/8	3071220000111	1.39	1.54	1.75	2.49	12	24	7.2 lbs.

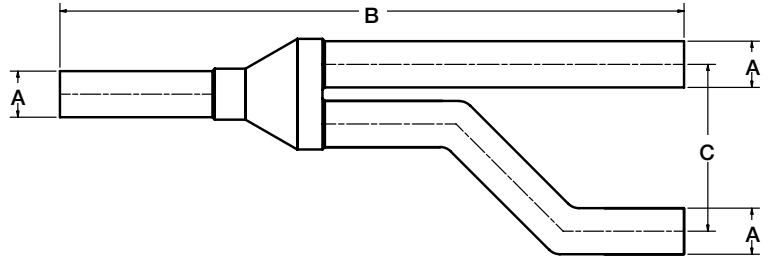
ANCILLARY PRODUCTS

ODM products are compatible with RLS fittings.



ODM Y-Joints

DIMENSIONS

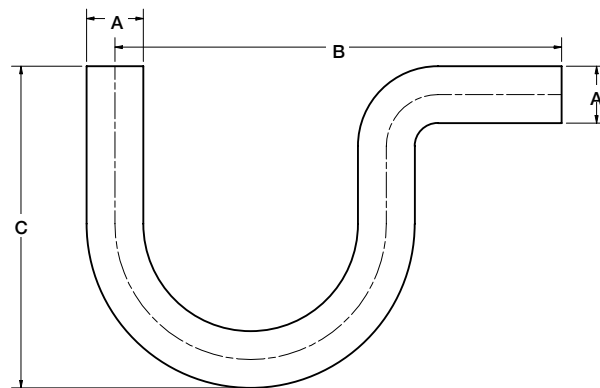


Size (Inch)	Part Number	Dimensions (Inches)			Box Quantity	Carton Quantity
		A	B	C		
3/8	3771060606111	0.38	7.56	2.36	2	44
1/2	3771080808111	0.50	8.94	2.48	2	44
5/8	3771101010111	0.63	9.45	2.60	2	42
3/4	3771121212111	0.75	10.16	2.72	2	24
7/8	3771141414111	0.88	12.09	2.87	2	24
1-1/8	3771181818111	1.13	13.11	3.54	1	10
1-3/8	3771222221111	1.38	14.92	4.06	1	10



ODM P-Traps

DIMENSIONS



Size (Inch)	Part Number	Dimensions (Inches)			Box Quantity	Carton Quantity
		A	B	C		
1/2	3761080800111	0.50	5.12	3.54	2	80
5/8	3761101000111	0.63	5.12	3.62	2	80
3/4	3761121200111	0.75	5.91	4.25	2	38
7/8	3761141400111	0.88	6.69	4.65	2	38
1-1/8	3761181800111	1.13	8.27	5.98	2	10
1-3/8	3761222200111	1.38	10.24	7.48	2	10



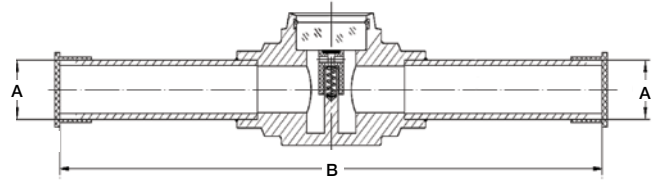
ANCILLARY PRODUCTS

ODM products are compatible with RLS fittings.

ODM Sight Glasses



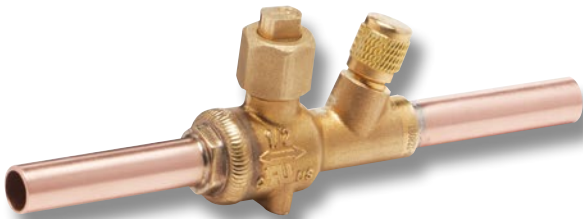
DIMENSIONS



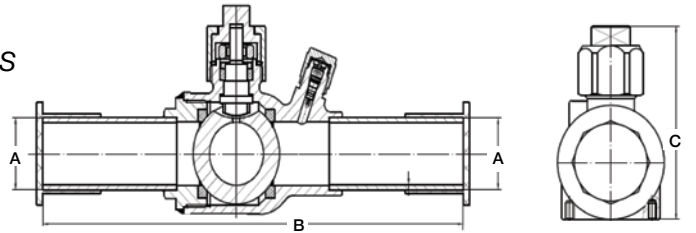
Size (Inch)	Part Number	Dimensions (Inches)		Box Quantity	Carton Quantity
		A	B		
1/4	3781040400111	0.25	4.02	1	100
3/8	3781060600111	0.37	4.69	1	100
1/2	3781080800111	0.50	6.10	1	100
5/8	3781101000111	0.63	6.14	1	50
3/4	3781121200111	0.75	6.34	1	50
7/8	3781141400111	0.88	6.57	1	50
1-1/8	3781181800111	1.13	7.56	1	30

ODM Ball Valves

(Bi-Directional with Schrader valves)



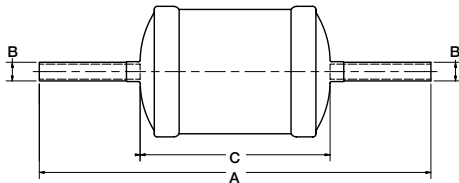
DIMENSIONS



Size (Inch)	Part Number	Dimensions (Inches)			Box Quantity	Carton Quantity
		A	B	C		
1/4	3791040400111	0.25	6.75	2.02	1	40
3/8	3791060600111	0.37	6.34	2.02	1	40
1/2	3791080800111	0.50	6.56	2.02	1	40
5/8	3791101000111	0.63	6.77	2.30	1	40
3/4	3791121200111	0.75	6.99	2.60	1	30
7/8	3791141400111	0.88	7.24	2.60	1	30
1-1/8	3791181800111	1.13	8.16	3.27	1	30
1-3/8	3791222200111	1.37	9.00	3.88	1	24

ODM Filter Driers

DIMENSIONS



Size (Inch)	Part Number	Desiccant (Cubic Inches)	Dimensions (Inches)			Box Quantity	Carton Quantity
			A	B	C		
3/8 Liquid Line	3821060600111	8	7.95	0.38	3.90	1	30
3/8 Liquid Line	3831060600111	16	8.86	0.38	4.80	1	30
1/2 Liquid Line	3831080800111	16	8.94	0.50	4.80	1	30
3/8 Liquid Line Bi-Directional	3921060600111	8	7.87	0.38	3.82	1	30
3/8 Liquid Line Bi-Directional	3931060600111	16	8.66	0.38	4.61	1	30

Part Number	Connections Inlet/Outlet	Flow Capacity Ton @ 1psi ΔP (For kw Multiply Ton By 3.5)				Water Capacity Drops of Water									
		R134a	R22 & R410A	R407C	R404A & R507	R134a		R22		R407c		R410A		R404A & R507	
						75°F	125°F	75°F	125°F	75°F	125°F	75°F	125°F	75°F	125°F
3821060600111	3/8" ODM	5.42	6.0	6.0	4.0	265	245	250	225	205	165	170	130	275	260
3831060600111	3/8" ODM	6.2	6.8	6.8	4.57	396	366	271	336	306	246	256	196	406	286
3831080800111	1/2" ODM	8.5	9.4	9.4	6.2	396	366	271	336	306	246	256	196	406	286
3921060600111	3/8" ODM	4.8	5.1	5.0	3.33	265	245	250	225	205	165	170	130	275	260
3931060600111	3/8" ODM	4.9	5.2	5.2	3.49	359	341	360	307	361	333	327	302	392	365

All ratings are in accordance with ANSI/AHRI standard 710-2009.



Klauke® 32 kN and 19 kN Press Tools

Benefits:

- Durable, high-quality construction that is built to last
- Short pressing cycle – 10 seconds or less – increases productivity
- Compact design and 350° jaw rotation allows technician to install in tight spaces
- Automatic piston return
- Safety feature that lets the press cycle be interrupted, allowing for manual release of the piston, if needed
- High-quality, powerful Makita Li-Ion technology, with charging time of just 15 minutes
- Tool service indicated via imbedded LEDs, illuminates at 10,000 cycles



**NOW AVAILABLE:
Klauke 32 kN tool and jaws!**



19 kN press tool

32 kN Tool Features:

Pressing Force: 32 kN
Presses/charge: 350-400 (4.0 Ah)
Battery Capacity: 18V / 2.0 Ah Li-Ion Makita (BL1820B)
Charging Time: 15 minutes
Operating Temp. Range: -10°C to 40°C (14°F to 104°F)
Weight with Battery:
 Without Jaw: 3.6 kg (8.0 lb)
 Including Jaw: 5.7 kg (12.5 lb)
Dimensions: 359 x 76 x 317 mm

19 kN Tool Features:

Pressing Force: 19 kN
Presses/charge: 100-150 (2.0 Ah)
Battery Capacity: 18V / 2.0 Ah Li-Ion Makita (BL1820B)
Charging Time: 15 minutes
Operating Temp. Range: -10°C to 40°C (14°F to 104°F)
Weight with Battery:
 Without Jaw: 1.8 kg (4.0 lb)
 Including Jaw: 3.1 kg (6.8 lb)
Dimensions: 395 x 80 x 118 mm

Klauke® Jaws

Klauke 32 kN Jaws

Size	Part Number
1/4"	399021321040
5/16"	399021321050
3/8"	399021321060
1/2"	399021321080
5/8"	399021321100
3/4"	399021321120
7/8"	399021321140
1"	399021321160
1-1/8"	399021321180
1-1/4"	399021321200
1-3/8"	399021321220
1-5/8"	399021321260
2-1/8"	399021321340

Klauke 19 kN Jaws

Size	Part Number
1/4"	399021191040
5/16"	399021191050
3/8"	399021191060
1/2"	399021191080
5/8"	399021191100
3/4"	399021191120
7/8"	399021191140
1"	399021191160
1-1/8"	399021191180
1-1/4"	399021191200
1-3/8"	399021191220

Klauke 15 kN Jaws

Size	Part Number
1/4"	399021151040
5/16"	399021151050
3/8"	399021151060
1/2"	399021151080
5/8"	399021151100
3/4"	399021151120
7/8"	399021151140
1-1/8"	399021151180

TOOLS, JAWS AND ACCESSORIES

Klauke® Tool and Jaw Kits



32 kN Tool (no jaws)
Part Number: 399011320001

19 kN Tool (no jaws)
Part Number: 399011190001

19 kN Tool and 5 Jaws
(3/8", 1/2", 5/8", 7/8", 1-1/8")
Part Number: 399011190501

Each kit includes the Klauke press tool, 2 lithium-ion batteries, a battery charger, and the accessory kit (contents listed at right) in a hard plastic carrying case.

8-Jaw Kits (no tool)
(1/4", 3/8", 1/2", 5/8", 3/4", 7/8", 1-1/8", 1-3/8")
32 kN Part #: 399031320801
19 kN Part #: 399031190801



Accessory Kit:

- Tubing cutter
- RLS depth gauge
- RLS press gauge
- Permanent marker
- Brush
- Abrasive pad
- Deburring tool

RIDGID® Jaws



Size	Part Number
1/4"	399022001040
5/16"	399022001050
3/8"	399022001060
1/2"	399022001080
5/8"	399022001100
3/4"	399022001120
7/8"	399022001140
1-1/8"	399022001180
1-3/8"	399022001220

RIDGID 8-Jaw Set

The RIDGID 8-Jaw Set comes in a hard plastic carrying case and includes a tube cutter, deburring tools, press gauge, depth gauge, stainless steel brush, abrasive pad and permanent marker. Jaw sizes include 1/4", 3/8", 1/2", 5/8", 3/4", 7/8", 1-1/8" and 1-3/8". The 5/16" jaw is sold separately.

Part Number: 399032000801

NOTE: RIDGID press tools are sold through RIDGID distributors, available in lightweight pistol-grip and inline models.

Accessories

Part Number	Description
399011000100	Klauke Replacement Tool Case
399031000100	Klauke Jaw Case
399032000100	RIDGID Jaw Case
399040307	1-1/4" Press Gauge
399040306	Press Gauge
399040308	Depth Gauge
399040301	Tube Cutter
399040302	Small Tube Deburring Tool (1/4" - 1-1/4")

Part Number	Description
399040309	Large Tube Deburring Tool (1/2" - 2")
399040303	Stainless Steel Brush
399040304	Abrasive Pad
399040305	Permanent Marker
399040101	Safety Kit (plastic bag, pen, instructions, crimp/depth gauges)
399040203	Makita 18V Charger - DC18RC
399040202	Makita 18V Battery - BL1815
399040201	Diagnostic tool - PGA1



Tool and Jaw Compatibility Matrix

			JAW MANUFACTURER				
			Klauke®			RIDGID®	Milwaukee®
TOOL MANUFACTURER	Model(s)	Size Range	15 kN	19 kN	32 kN	24 kN	32 kN
	MAP2L	1/4" – 1-1/8"	✓				
	MAP2L19	1/4" – 1-3/8"		✓			
	UAP 332	1/4" – 1-3/8"			✓		✓
	UAP 432	1/4" – 1-3/8"			✓		✓
	Romax Compact	1/4" – 1-3/8"		✓			
	Romax 3000	1/4" – 1-3/8"			✓		✓
	Romax 4000	1/4" – 1-3/8"			✓		✓
	PC-20 M	1/4" – 1-1/8"	✓				
	RP 200 RP 210 RP 240 RP 241	1/4" – 1-3/8"				✓	
	RP 330 RP 340 RP 350 RP 351	1/4" – 1-3/8"			✓		✓
	M12	1/4" – 1-3/8"				✓	
	M18	1/4" – 1-3/8"			✓		✓
	Pressgun Picco 6	1/4" – 1-3/8"				✓	
	Pressgun 6	1/4" – 1-3/8"			✓		✓
	ACO103	1/4" – 1-3/8"		✓			
	ACO203	1/4" – 1-3/8"			✓		✓
	ECO203	1/4" – 1-3/8"			✓		✓
	EFP203	1/4" – 1-3/8"			✓		✓
	DCE200	1/4" – 1-3/8"			✓		✓

Only RLS-approved tools and jaws can be used to install RLS fittings.

TECHNICAL DATA

Applications

- High Pressure HVAC/R
- Ethylene Glycol
- Non-Potable Water

Product Parameters

- Continuous Operating Temperature: 250°F / 121°C
- O-Ring Temperature Rating: -40°F to +300°F / -40°C to +149°C
- Maximum Rated Pressure (MRP): 700 psi / 48 bar
- Minimum Burst Pressure (UL 207): 2,100 psi / 145 bar
- Vacuum Pressure Capability: <200 Microns
- External Helium Leak Rate: <7.5 x 10⁻⁷ Pa·m³/s at 20°C & 10 bar
- Vibration Resistance: Conforms to UL109
- Size Availability (Inches): 1/4, 5/16, 3/8, 1/2, 5/8, 3/4, 7/8, 1, 1-1/8, 1-1/4, 1-3/8, 1-5/8, 2-1/8

Fitting Materials

- Fitting Body: Refrigerant Grade Copper, per ASTM-B75 or ASTM-B743
- O-Ring: HNBR

Compatibility

- Approved Oils: Mineral Oil, POE, PVE, PAG
- Approved Tubing Materials: Copper-to-Copper Connections
- Approved Tubing Tolerance: ASTM B88/B280, EN 12735 & AS/NZS 1571
- Approved Copper Tubing Types for 32 kN Tool/Jaws
 - Hard/Drawn: 1/4" - 2-1/8" Type ACR, L, K
 - Soft/Annealed: 1/4" - 1-3/8" Type ACR, L, K
- Approved Copper Tubing Types for 19 kN Tool/Jaws
 - Hard/Drawn: 1/4" - 1-3/8" Type ACR, L, K
 - Soft/Annealed: 1/4" - 1-3/8" Type ACR, L, K
- Approved Copper Tubing Types for 15 kN Tool/Jaws
 - Hard/Drawn: 1/4" - 1-1/8" Type ACR, L; 1/4" - 7/8" Type K
 - Soft/Annealed: 1/4" - 1-1/8" Type ACR, L; 1/4" - 7/8" Type K

Agency Approvals and Certifications

- UL Listed: 207, SA#33958, SDTW (7) (Except where noted)
- UL Listed: Approved Use For Field & Factory Installations
- ISO 5149-2: Part 2 Compliant
- ASHRAE-15, ANSI 15, ASME B31.5 (504.7)
- ICC-ES, PMG-1296
- International Mechanical Code (IMC) 2021, 2018, 2015, 2012, 2009, 2006
- International Residential Code (IRC) 2021, 2018, 2015, 2012, 2009, 2006
- Uniform Mechanical Code (UMC) 2021, 2018, 2015, 2012, 2009, 2006
- CRN OA22551

RLS Press Fitting Patents

- U.S. Patent No. 9,145,992
- U.S. Patent No. 9,638,361
- U.S. Patent No. D730,494
- Australian Patent No. 2012362443
- Brazilian Patent No. BR112014016012-0
- Canadian Patent No. 2,800,360
- Canadian Design Registration No. 149228
- EUIPO Registered Community Design No. 002218636-0001
- Japanese Patent No. 6051468
- Other Pending Patent Applications

RLS Press Tools and Jaws Patents

- Australian Design Registration No. 361533
- Canadian Design Registration No. 161804
- EUIPO Registered Community Design No. 002672667-0001
- Japanese Design Registration No. 1537545
- Other Pending Patent Applications

⚠ WARNING: Some of our ancillary products can expose you to chemicals including lead, which is known to the State of California to cause cancer and birth defects or other reproductive harm. For more information go to www.P65Warnings.ca.gov.

**PROUDLY MADE
IN AMERICA** 



Download
the RLS
Toolbox App!



Access
Literature



rapidlockingsystem.com
training.rapidlockingsystem.com

info@rapidlockingsystem.com • 833-RLS-FAST (833-757-3278)